

Open Discussion: Sustainability of a community prescribed fire information system

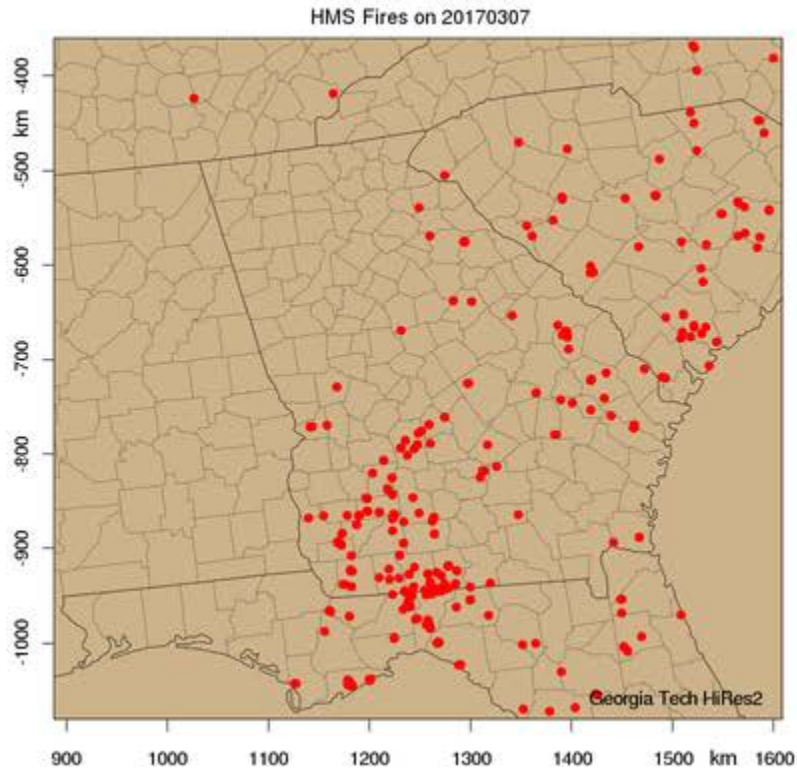
Goal

- The goal of this discussion is to identify viable ways of supporting the community prescribed fire information system in the future.

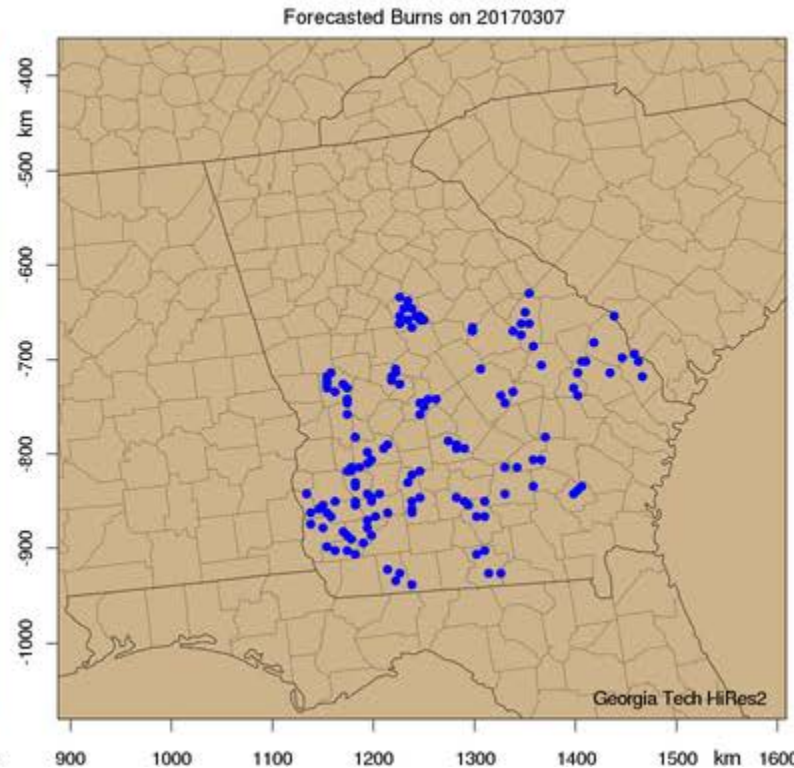
We forecast the next day's burns in Georgia using the weather forecast and past burning patterns.



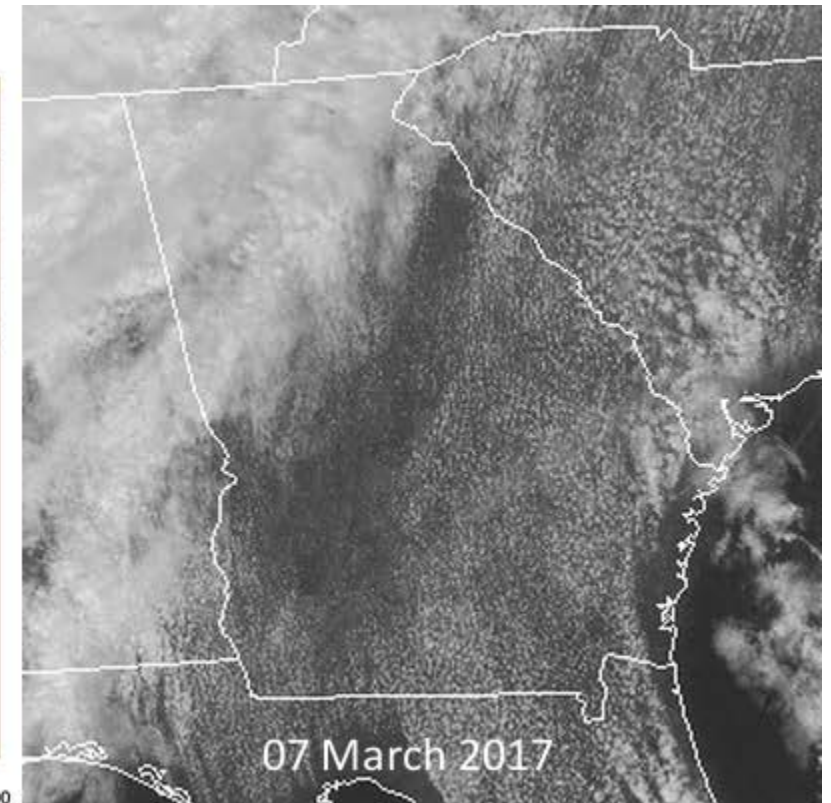
Fires from Satellite



Our Burn Forecast



Cloud Cover from Satellite



We also forecast air quality impacts of PB to facilitate Dynamic Management of burns and air quality.

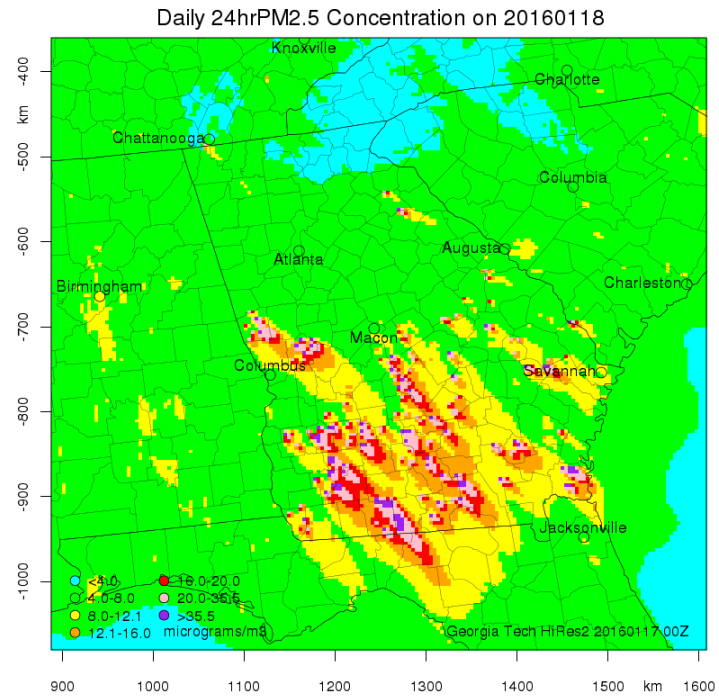


- Goal: Maximize the use of PB while minimizing air quality impacts
- Hi-Res2 Air Quality and Source Impact Forecasting System (a WRF/CMAQ based system)
- Air quality and PB impact forecasting in Georgia since 2015 (<https://forecast.ce.gatech.edu>)

Burn Area Forecast

Thomas County	
Burn Area	1400 acres
PM_{2.5}	75 $\mu\text{g}/\text{m}^3$
PB Impact	70 $\mu\text{g}/\text{m}^3$

PM_{2.5} Forecast



PB Impact Forecast

