



Applications currently hosted on zLinux.

Links to Other Sites/Files

For security reasons only computers on the State Network can access the db applications. If you need access from home or on the road, contact Carl, Tony, or Tom.

[State Park Website](#)

[MoneyCounts](#)

[Annual Operations Report](#)

[Attendance/CSW/Vols/Litter/Recycle](#)

[Award Nominations / Recipients](#)

[Cash Management Plan](#)

[Central Reservation System \(Rentals\)](#)

[conference](#)

[Division Correspondence](#)

[Division Personnel / Park Info](#)

[Donation](#)

[DPR IT](#)

[eFile](#)

[Exhibit Program](#)

[Facility Inventory](#)

[FIND](#)

[Fire Management](#)

[Fixed Assets/Surplus](#)

[FOFI Permits](#)

[Fuel/Vehicle/Equipment](#)

[Human Resources \(Seasonal\)](#)

[I & E](#)

[I & E Mind Meld](#)

[I Recall](#)

[Lost and Found](#)

[Monthly Activity Report](#)

[NRID](#)

[P&R News](#)

[PAC](#)

[PARTF](#)

[Personnel / Archive Image Database](#)

[Phone Bill](#)

[Photo Point](#)

[Policies-Staff Directives/Guidelines](#)

[PR-63 / DCI / CITE](#)

[Project Tracking-DPR](#)

[Publications](#)

[Raleigh Office Parking](#)

[RAP](#)

[Retail Sales](#)

[Safety Resources](#)

[Secondary Employment Approval](#)

[Sign Request](#)

[Special Activity Permit](#)

[State Lakes](#)

[State Park System](#)

[System Expansion](#)

[System Plan](#)

[The ID \(Image Database-Scenics, Plants, Animals, etc.\)](#)

[Training History/Certificates/Awards](#)

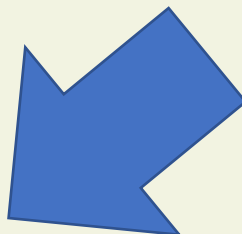
[Training \[Calendar/Evaluation\]](#)

[Travel Authorization](#)

[Warehouse](#)

[What is your status?](#)

[Workers' Comp](#)





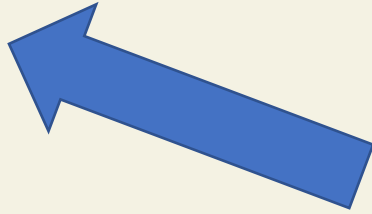
Welcome to the NC State Parks System **Fire Management** Database

Select a Function: ▼

- Select a Function:
- Fire Management Plans
- Burn Units & Prescriptions
- Burn History
- Search Burn History
- Training History
-
- Fireline Prep

Fire Gallery

Fire Gallery is a place to store and access photographs, searchable by park and date



This is the main menu screen. Each function has virtually unlimited storage capability

- Plans—upload overall fire plans for each park
- Units and RXs—upload prescriptions, maps, store all former and current RXs
- Burn history—a place to add a record for each fire by park and date
- Search Burn History—this is where it gets interesting

- Training and fireline prep—no longer used, these are tracked elsewhere

This section is where you upload all current prescriptions. To upload information regarding fires that have been performed add to the **Burn History** page.

It is expected that there will be geographic or temporal overlap on prescriptions. Error on the side of more information and describe in the Comments box what you have uploaded.

Burn Units and Prescriptions at Falls Lake State Recreation Area

Burn Unit: B.W. Wells

Enter Documentation/Evaluations of all burns in the "Burn History" section.

Unit Name and/or ID	<input type="text" value="B.W. Wells"/> unit_name
Acres in Rx	<input type="text" value="713.0"/> acres
Comments	<div style="border: 1px solid gray; height: 200px;"></div>
Unit Prescription(s)	<p>View Rx for Unit B.W. Wells BW_Wells_Fire_Plan.doc at 191.50 KB <==> View<====> delete</p> <p>Select your file to upload. (Should be an Excel, Word or PDF file.)</p> <p><input type="button" value="Browse..."/> No file selected.</p> <p>URL for any Rx already uploaded:</p> <input type="text"/>
Unit Map(s)	<p>View Map for Unit B.W. Wells BW_Burn_Map.pdf at 1.85 MB <==> View<====> delete</p> <p>Select your file to upload. (Should be a JPG or PDF file.)</p> <p><input type="button" value="Browse..."/> No file selected.</p> <p>URL for any Map already uploaded:</p> <input type="text"/>
Delete	<input type="button" value="Update"/>

This is the place to enter data for each RX. Each park can have as many RXs as you wish allowing archiving of all fire information, including old RXs and burn unit maps.

A major issue that most programs have is the lack of a central repository of historical information.

Burn History

JONE

Select a Unit:

Select a History for a Salters Lake 2014:

[Add](#) a Burn History for Salters Lake 2014 at JONE

Assign a name to an unnamed unit by selecting "Burn Units" in the first drop-down menu.

Burn History 2014-09-11 for Unit Salters Lake 2014 at Jones Lake State Park

Type of Burn Prescribed Wild

Date of Burn yyyy-mm-dd

Acres Burned

Rx used on this fire, may be used multiple times. View Prescription: [JONE Salters Lake RX Plan.xlsx at 54.91 KB](#)

Select your files to add (can include burn maps, evaluation forms).

Evaluation of Burn No file selected.

View Evaluation: [file](#) ==> [9-11-14 Rx Burn.jpg](#) ==> [delete](#)

Comments

GIS entry completed

Enter [Participants](#)

Burn Boss: Crate, Thomas J-ARCH*710
Garner, Thomas D.-JONE
Keenan, Richard A-LAWA
Williamson, Justin T-ARCH
Dodson, James W-ARCH
Servedior, Kyle

[Delete](#)

Lots of info here:
Since this is a relational database most of these fields are linked to various tables.

Links to the RX used
Links to maps
Links to personnel

Can click on the hot links to pull up full copies of the RX and map

Permissions to change data are tiered allowing access at either the park, region, or division level to protect the data but allowing park-level data entry.



Welcome to the NC State Parks System **Fire Management** Database

Search Burn History ▾

Fire Gallery

Burn History Search

Date of Burn: partial dates, e.g., 2011 for year, Feb for month, or 7 for day

Parks with a Burn:

Burn Type: Prescribed Wild Both

Acres Burned >=

Acres Burned <=

Comments:

Search

Reset

No record found.

This is the search page. Can be queried by day, month, year, park, wild or prescribed fire, and relative size of the fire.

This is where all the background information entered by the field staff becomes really useful.

Welcome to the NC State Parks System **Fire Management** Database

Search Burn History ▾

Fire Gallery

Burn History Search

Date of Burn: partial dates, e.g., 2011 for year, Feb for month, or 7 for day

Parks with a Burn: ▾

Burn Type: Prescribed Wild Both

Acres Burned >=

Acres Burned <=

Comments:

Search

Reset

Excel Export

unit_name	history_id	park_code	burn_type	date_	acres_burned	comments	gis_done
North River Unit	burn summary	PIMO	prescribed	2017-02-27	207.0		x
North River Unit	burn summary	PIMO	prescribed	2017-04-10	55.0	Planned to burn 90, cut burn off at 55 acres after three spotovers adjacent to line.rn1st spot over was around 1500 sq ft- piece of burning virginia pine caught microstegium on fire across the line. Already was greening up so spot was just a slow creep.rnrnSecond 2 spots were around 300 sq feet each- a oak snag down in a south facing gully below the line ignited. Fore climbed to the top and it began spitting embers. Snag was dropped without incident and no further spotovers occurred.rnrnRH bottomed out at 39% Temp 80. Winds switched from SE to steady S at 5-10 mph. Put a lot of pressure on the one bend in the line (where the snag was located below)	x
North Mountain	burn summary	PIMO	prescribed	2017-02-01	124.0	https://www.dropbox.com/sh/y8428167kvtev1g/AABsnkSlsixlnADmGYtN7dka?dl=0	x
Pilot Creek	burn summary	PIMO	prescribed	2017-03-22	8.0	BC 4, Transp. winds to 14, eye level 6 with gusts to 10 mph out of the North, RH bottomed out at 25%. Field was almost 100% tall fescue. Put out a tremendous amount of smoke. Smoke went straight into the park but created a spectacle for surrounding neighbors who came over to watch. Park will follow up with cool season grass specific herbicide (plateau). Field is being managed as part of USFW Milkweed/Monarch habitat program	x
PIMO Ararat	burn summary	PIMO	prescribed	2017-02-14	39.0		x
Total acres: 433							

Example query, all prescribed fires at Pilot Mt. in 2017. All fires shown can be further investigated by clicking on the unit name that will call up all information related to that prescription name. The burn summary will access a page with a complete burn history of that day's fire.

Pilot Mtn State Park Prescribed Burning Plan

Latitude 36.15.8176 Longitude 80.29.3568

PART 1 GENERAL INFORMATION

Landowner: NC DIVISION OF PARKS/RECREATION

Address: 1792 PILOT KNOB PARK RD
PINNACLE, NC

Phone: 336-325-2355

Agent: MATT WINDSOR

Agent Phone: 336-341-0890

Initial Estimates

Acres to Burn: 244

Miles to Plow: 0

Miles Bladed Line: _____

Hand Line: 0
2.8 MILE OF

Purpose of Burn

Site Prep

Silviculture

Haz Reduction

Wildlife Habitat

PART 2 PRE-BURN PLANNING

Reduce 1 and 10 hour fuels by
Top-kill 30-60% of the less des
trees and shrubs as measured

Specific Objectives: _____

Overstory Species: SHORTLEAF PINE, SOUTHERN RED

Age of Dominant Species: 60 Understory Species: _____

Fine Fuels: LEAVES Litter De _____

% Slope: 0-40 Aspect: N.S.E Elevation (ft): 700

For In-Stand Burning: Basal Area (sq ft): 100 Ht. to _____

Smoke Management:

Direction to Smoke Sensitive Area (SSA)	N	NE	E
Distance to SSA (miles)	8	5	4

Distance to SSA (miles)

Smoke Mngt./Tonnage: Estimated Acres 244 X Est. Total _____

Acceptable Range of Weather parameters (To Be Completed By, Or _____)

Temp. (°F): 33 to 85 RH (%): 25

Wind Direction (Surface): x N x NE X E X

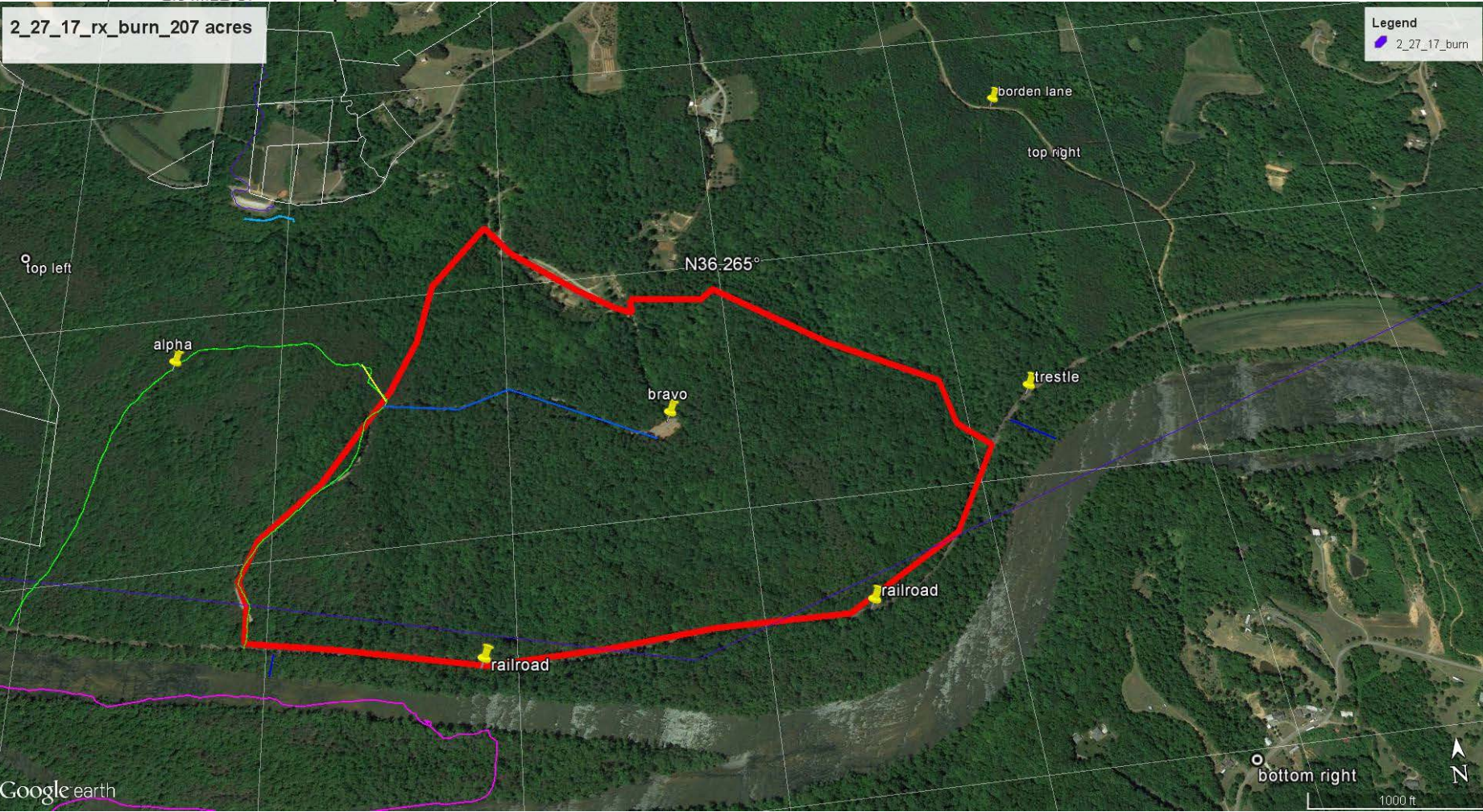
Mix Height (ft): 1700 to 6500 Wind Direction (_____)

Nighttime Smoke Dispersion (minimum): ANY

KBDI: 10 to 450 Fine Fuel Moisture (%): 4

Refer to D-10 pocket
of any of these 3 pa

Other Weather Considerations: Temp. over 55.



Directly from links in the fire history you can call up the RX used on the fire and any map that had been uploaded.

Search Burn History

Fire Gallery

Burn History Search

Date of Burn: partial dates, e.g., 2011 for year, Feb for month, or 7 for day

Parks with a Burn:

Burn Type: Prescribed Wild Both

Acres Burned >=

Acres Burned <=

Comments:

Search

Reset

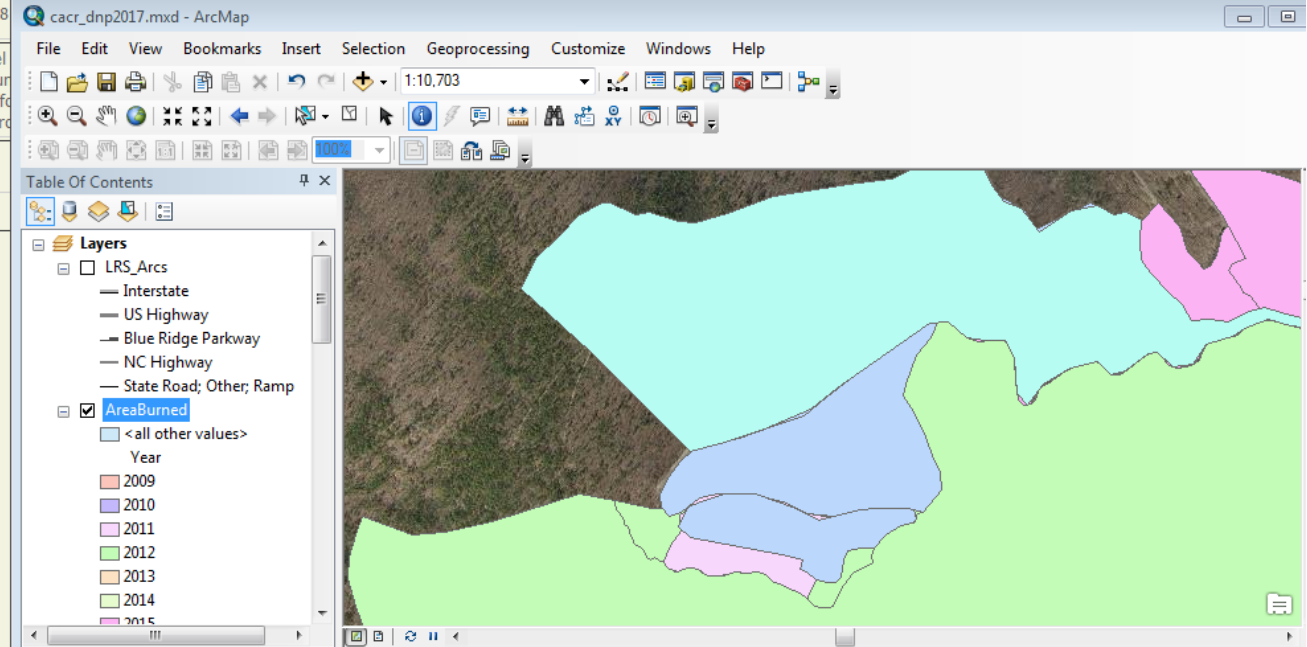
Excel Export

unit_name	history_id	park_code	burn_type	date_	acres_burned	comments	gis_done
North River Unit	burn summary	PIMO	prescribed	2017-02-27	207.0		x
						Planned to burn 90, cut burn off at 55 acres after three spotovers adjacent to line.rn1st spot over was around 1500 sq ft- piece of burning virginia pine caught microstegium on fire across the line. Already was greening up so spot was just a slow creep.rnSecond	x

Table

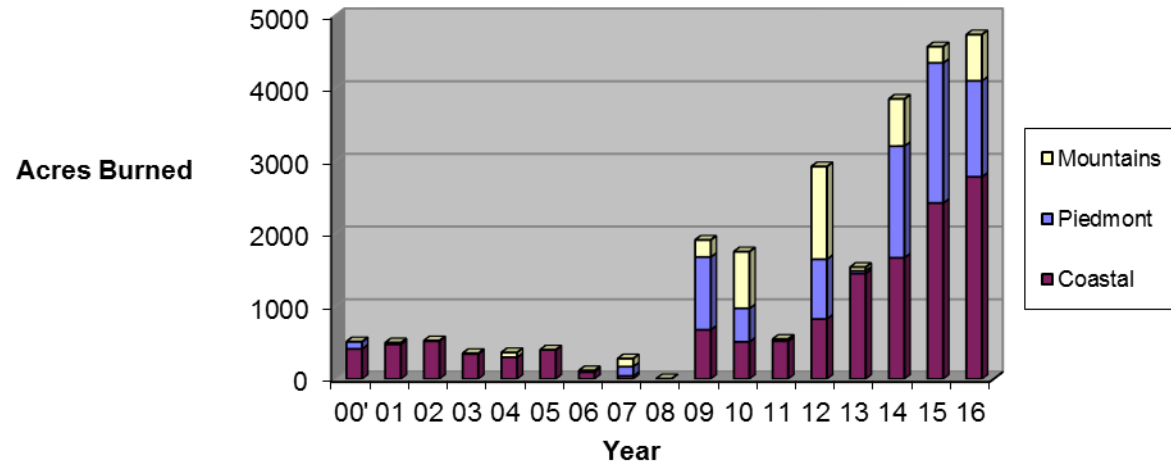
AreaBurned

OBJECTID *	Shape *	Unit	Acres	ID	Year	Date	Shape_Length	Shape_Area	PK_ABBR
459	Polygon	Weymouth Tract	9 485		2016	10/4/2016	780.895669	35098.355033	WEWO
467	Polygon	Holly Point/Shinleaf SRA	7 489		2016	11/3/2016	1086.633479	29333.162276	FALA
462	Polygon	Wildfire	2527	Party Rock	2016	11/5/2016	37322.66962	10227979.134402	CHRO
465	Polygon	Wildfire	5282	Chestnut Knob	2016	11/6/2016	38609.377983	21376297.907509	SOMO
469	Polygon	JONE complex	14 490		2017	1/12/2017	1384.734792	56664.369335	JONE
470	Polygon	Between Two Lakes	225 493		2017	1/18/2017	4943.2548	910189.312588	JONE
474	Polygon	Weymouth Tract	41 495		2017	1/25/2017	1592.740973	165177.375785	WEWO
472	Polygon	Jones/BLSF Co-op	63 494		2017	1/27/2017	3837.894845	253711.805227	JONE
482	Polygon	CLNE Complex	53 500		2017	2/1/2017	2426.55681	212616.841442	CLNE
499	Polygon	North Mountain	129 499		2017	2/1/2017	4326.897709	520734.329955	PIMO
509	Polygon	Moore's Wall	184 501		2017	2/2/2017	4514.80999	744251.609873	HARO
489	Polygon	Paddy's Creek South	95 502		2017	2/14/2017	3963.912155	383765.254925	LAJA
501	Polygon	PIMO Ararat	41 210		2017	2/14/2017	2237.069434	164368.978741	PIMO
486	Polygon	JONE Complex	7 509		2017	2/17/2017	1083.812555	26868.320893	JONE
487	Polygon	JONE Complex	2 509		2017	2/17/2017	363.293052	7460.160536	JONE
505	Polygon	Boyd Unit 4	6 507		2017	2/17/2017	715.08342	25563.738234	WEWO
503	Polygon	Stone Mountain	632 506		2017	2/20/2017	7097.413429	2556343.942772	STMO
475	Polygon	CABE Complex	64 515		2017	2/21/2017	2404.226429	256985.609513	CABE
488	Polygon	JONE Complex	15 512		2017	2/23/2017	1228.102876	59833.69077	JONE
496	Polygon	North River Unit	202 514		2017	2/27/2017	3789.065302	817016.06719	PIMO
491	Polygon	Wire Pasture	69 521		2017	3/6/2017	3384.845573	279006.334666	LURI
493	Polygon	MOMO Burn Unit 1	664 519		2017	3/6/2017	9432.355675	2685436.593283	MOMO
494	Polygon	MOMO 4 North	582 522		2017	3/7/2017	7011.197604	2356089.222981	MOMO
483	Polygon	B.W. Wells	21 523		2017	3/13/2017	1278.441004	83771.730164	FALA
476	Polygon	2015 CACR Complex	94 525		2017	3/20/2017	2819.320665	381224.553416	CACR
502	Polygon	Singletary Lake	39 550		2017	3/21/2017	1801.968354	156143.165982	SILA
504	Polygon	Weymouth Tract	32 526		2017	3/21/2017	1611.726412	128801.526663	WEWO
500	Polygon	Pilot Creek	11 530		2017	3/22/2017	860.424905	42964.44088	PIMO
490	Polygon	Long Arm Unit 3	612 537		2017	3/24/2017	11573.994458	2477479.255469	LAJA
495	Polygon	221 Access Area	90 539		2017	3/24/2017	3855.239384	363801.586982	NERI



From the burn map each fire is subsequently mapped in GIS linked to the fire database by date and park. Column on the right (gis_done) in the fire history let's us know that the fire has been mapped in GIS.

Prescribed Burning at NC State Parks 2000-2016



The Database contains complete information for all fires dating back to 2009.

We can go back any time and add follow up information such as fire effects, photographs, news clipping, anything, for any fire.

Welcome to the NC State Parks System **Fire Management** Database

Search Burn History

Burn History Search

Date of Burn: partial dates, e.g., 2011 for year, Feb for month, or 7 for day

Parks with a Burn:

Burn Type: Prescribed Wild Both

Acres Burned >=

Acres Burned <=

Comments:

unit_name	history_id	park_code	burn_type	date_	acres_burned	comments	gis_done
Fly Trap	burn summary	CABE	prescribed	2009-04-01	23.0	From NRCS report. Acreage is a guess for flytrap but this record also includes the 3 acre phragmites fire.	
CABE Complex	burn summary	CABE	prescribed	2009-03-06	117.0	From NRCS report. Called \"CABE Welcome Center\" fire.	